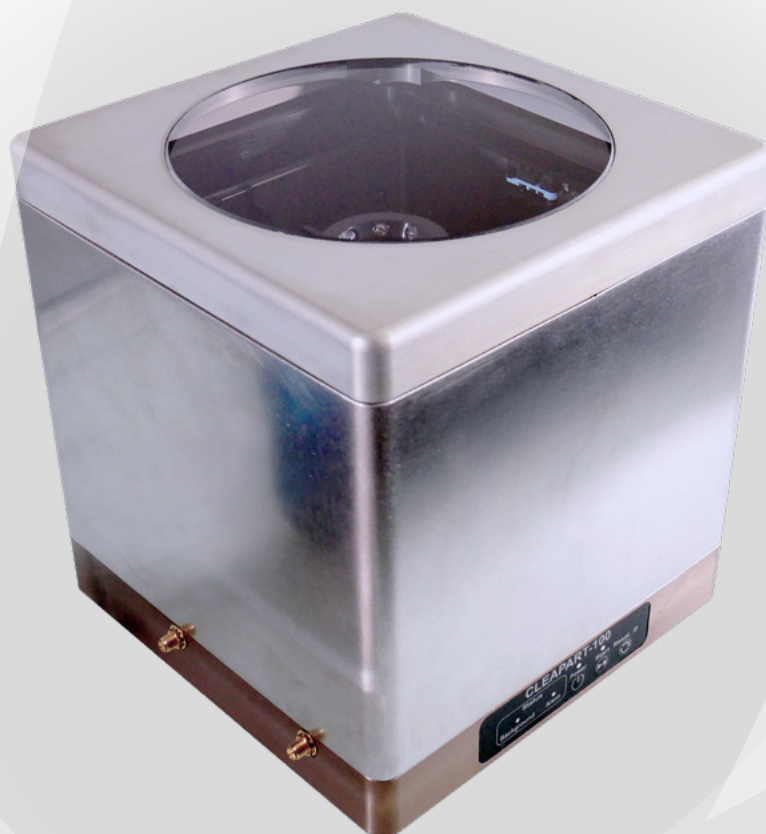


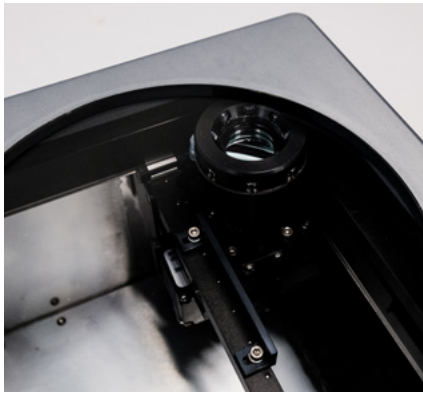


CLEAPART-100



Particle Deposition Monitor

- **Real time** particle deposition measurements and data reports
- **Autonomus** passive collecting device
- **High volume collection** with a 100 cm² surface



CLEAPART-100

Particle Deposition Monitor

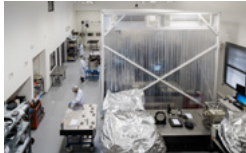
Remaining particles on cleanrooms affect the operational quality on final products. Developed and manufactured by Winlight company, a subsidiary of Bertin Technologies, Cleapart is a particle deposition rate monitoring device that ensures safety operations when working with sensitive surfaces.

Particles deposited on the glass collection surface are detected, measured and recorded by a high resolution camera coupled to a microscope objective that scans the complete analysis area on real time.

Applications



Optics



Cleanroom



Pharmaceutical

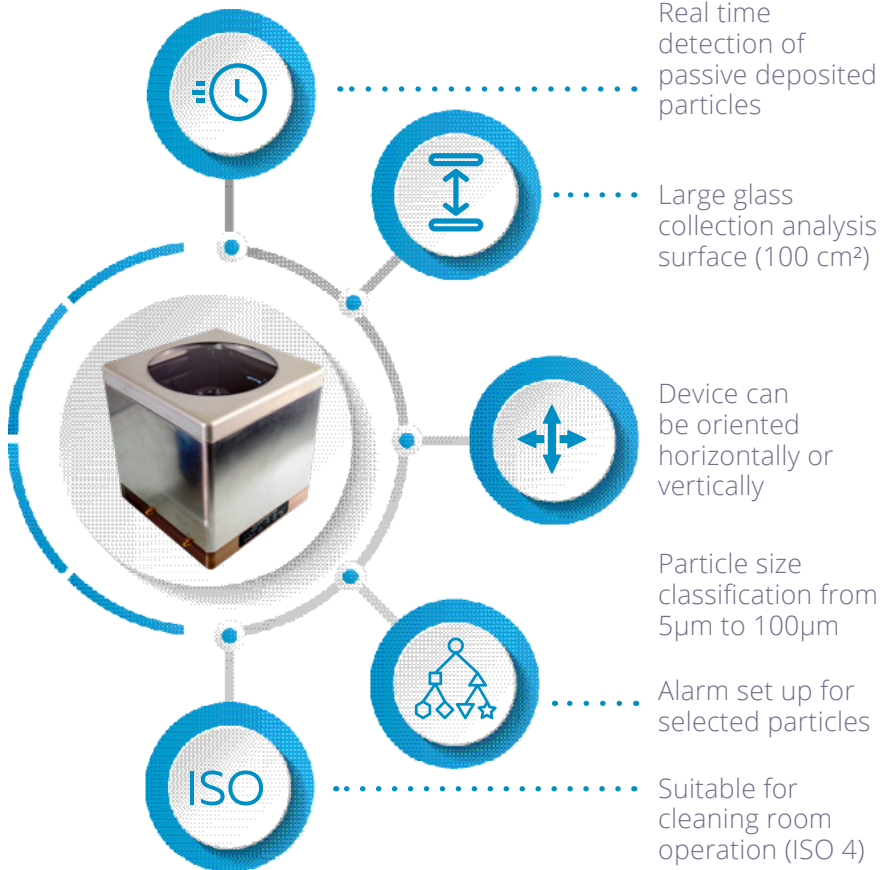


Spatial



Big Sciences

Benefits:



Technical specifications

DETECTION SPECIFICATION

Pixel size: 2µm
 Number of pixels/scan: 1970 Megapixels
 No periodic calibration needed (self calibration)

DATA OUTPUT

Detected particles: ≥ 5µm
 According to your predefined standard : >5 - >15 - >25 - >50 - >100µm (ie. IEST 1246D)
 Scan time: ≈ 7 mn
 First and last scan images available
 Scan programmation (date and frequency)
 Cumulative output and by events

SOFTWARE CONTROL

Single unit:
 - Software control delivered on flash drive (Windows 7, 8)
 - Ethernet link with PC (PC supplied as an option)
 Networked unit (optional):
 - Control with web interface (OS independent)
 - Network connection

COLLECTING SURFACE

100 cm²
 SiO₂ glass material (other transparent glass available upon request)
 Cleanable surface (cleaning procedure provided)

PHYSICAL

Dimensions:
 > 210x210x200mm (for single unit)
 > 210x210x300mm (for networked units)
 Weight: <6kg (single unit only)
 Fanless (closed enclosure)

ELECTRICAL

Power supply: 100-240 V

ENVIRONMENTAL

Automatic test for camera dazzle
 Cleanroom suitability: ISO 4 (ISO14644-1, GMP)
 CE compliant

Life Sciences solutions range

