

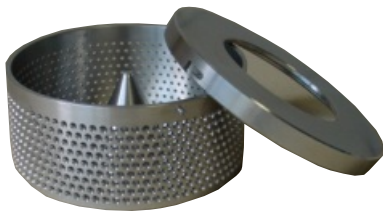


Filtration Centrifuge
SIEVA-2

Description

- Maintenance free induction drive
- Microprocessor controlled speed regulation
- Speed pre-selection from 250 rpm up to 10.000 rpm in increments of 250 rpm
- Running time pre-selection from 1 min. to 60 min. in increments of 1 min. or continuous run
- Imbalance switch-off
- Automatic lid-lock
- Transparent centrifuge lid for visual control

Centrifugal basket 500 ml - perforated



- Equipped with a special bayonet catch, therefore its lid can easily be removed as well as solids remaining after the run. The sealing made of NBR-rubber is replacable.
- To guarantee an evenly spread out of the centrifugal material and the possible rinsing agent, the center of the basket is molded cone-shaped towards the lid.
- Due to the distance of 2,3 mm from the upper row of perforation to the top and 5,2 mm from the lower row to the bottom of the rotor the filter paper sheets can easily be inserted, without any danger of underwashing.
- There are 10 rows of perforations at this rotor.

- Diameter of the perforation holes in mm: 2,5
- Horizontal distance from hole to hole in mm: 5,5
- Vertical distance from hole to hole in mm: 5,5
- Inner diameter of the basket in mm: 140
- Outer diameter of the basket in mm: 148

Technical Data

- Speed max.: 10.000 rpm
- RCF max.: 7.825 x g
- Acceleration time in sec.: 36
- Deceleration time in sec.: 66
- Current supply: 230 V / 120 V
- Power supply: 805 VA

Dimensions

- W x H x D (in cm): 39 x 36 x 49
- Weight (in kg): approx. 25

Centrifugal basket 500 ml - non-perforated



- For details see description of "Centrifugal basket 500 ml - perforated"

- Order No. Sieva-2 230 V / 50-60 Hz: 288.00 V01
- Order No. Sieva-2 120 V / 50-60 Hz: 288.00 V02

- Order No. Rotor perforated: 221.07 V02
- Order No. Rotor non-perforated: 221.07 V04

HERMLE
LABORTECHNIK

HERMLE Labortechnik GmbH
Siemensstrasse 25
78564 Wehingen
Germany

Phone + 49-74 26- 96 22-50

Fax + 49-74 26- 96 22-49

E-mail: vertrieb@hermle-labortechnik.de

Internet: <http://www.hermle-labortechnik.de>

Technical modification rights reserved.

www.ert.pt

info@ert.pt

Telf. 217 142 066 - Fax. 217 145 674

Rua Soeiro Pereira Gomes, Lote 5, Cave Drt.
2845-387 Amora Portugal